



# MONTHLY MEMBERSHIP PROGRESS REPORT

District 315A2

Results as of: 3/31/2017

GMT: NAZMUL HAQUE

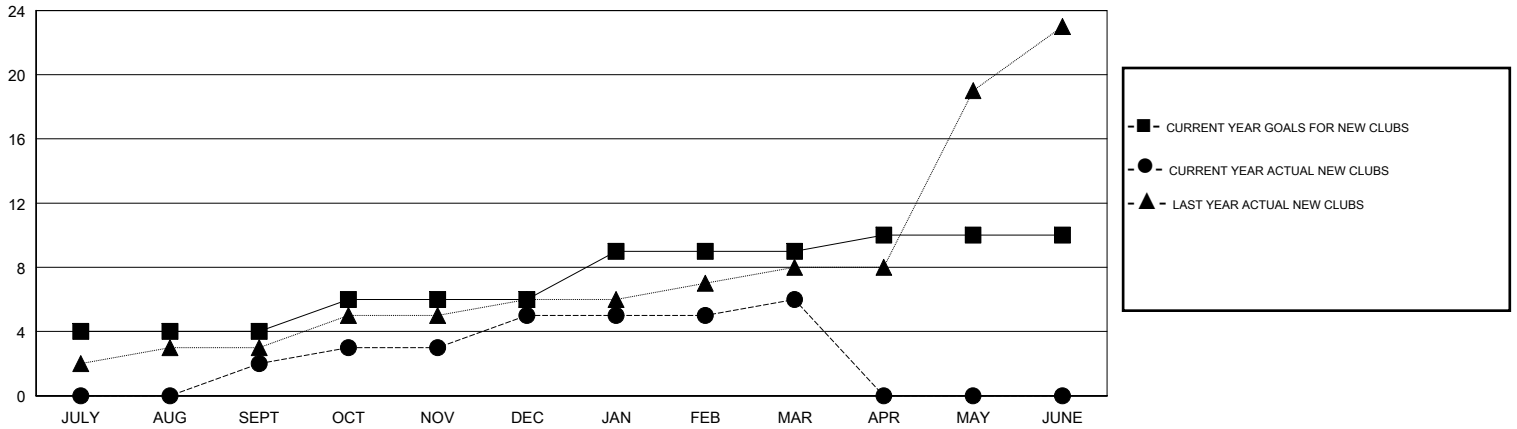
LOCATION REP OF BANGLADESH

GMT CA

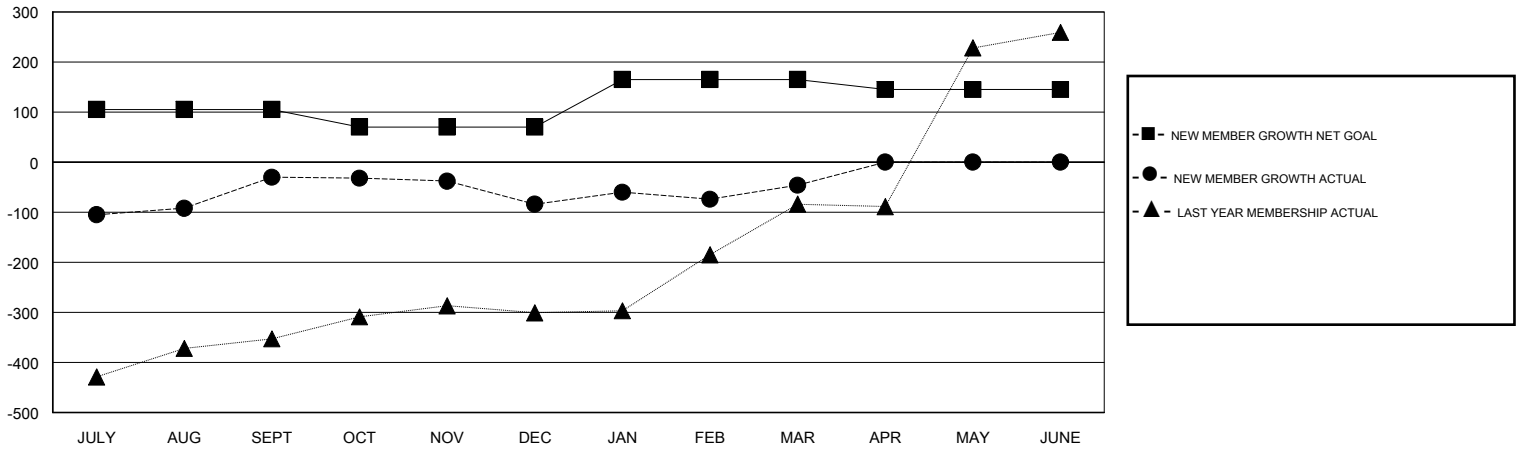
Clubs			
RESULTS FOR 2016-2017			
QUARTER	NEW CLUB GOAL	NEW CLUBS	DROPPED CLUBS
JULY/AUG/SEPT	4	2	0
OCT/NOV/DEC	2	3	1
JAN/FEB/MAR	3	1	0
APR/MAY/JUNE	1	0	0

Members			
RESULTS FOR 2016-2017			
QUARTER	NEW MEMBER GROWTH NET GOAL (not reinstated or transfers)	NEW MEMBER GROWTH ACTUAL (not reinstated or transfers)	DROPPED MEMBERS ACTUAL (including transfers)
JULY/AUG/SEPT	105	116	146
OCT/NOV/DEC	-35	154	208
JAN/FEB/MAR	95	98	60
APR/MAY/JUNE	-20	0	0

GOALS AND ACTUAL NEW CLUBS CUMULATIVE



GOALS AND ACTUAL MEMBERS CUMULATIVE



DROPPED CLUBS: 1	46 CLUBS OF 127 ADDED 1 OR MORE NEW MEMBERS	<u>GENDER DISTRIBUTION</u>	
DROPPED MEMBERS		MALE	3,042 (78.28%)
DECEASED	0	FEMALE	844 (21.72%)
CLUB CANCELLED	48	TOTAL FAMILY UNIT MEMBERS	
OTHER	366	2,180	
TOTAL	414	FAMILY MEMBERS PAYING HALF DUES	
		1,635	

[CLICK HERE FOR CUMULATIVE MEMBERSHIP DATA](#)